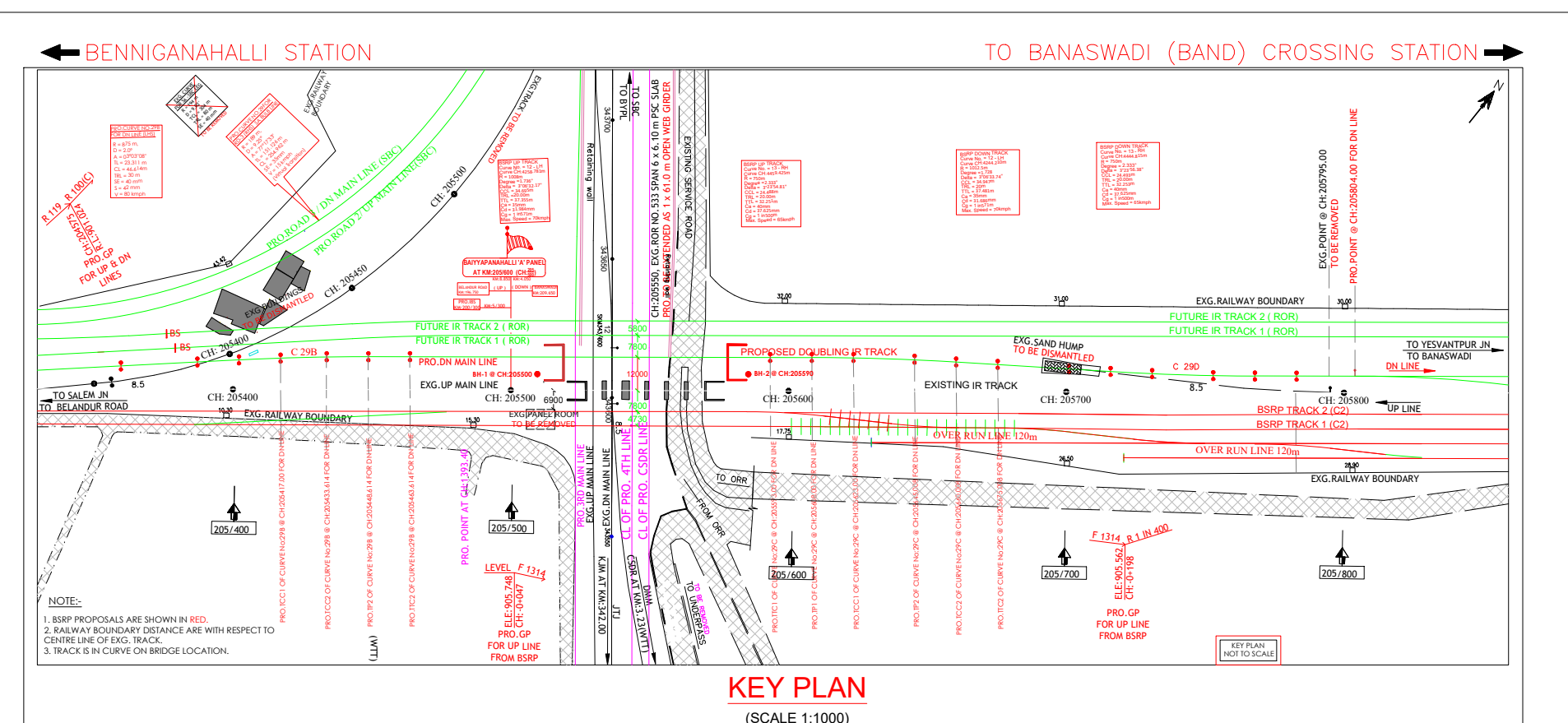


BIS	STRATA DESCRIPTION	DEPTH IN METERS	REMARKS	
			WATER CONTENT (%) (W _t)	W _L (%)
	LOGS TO MEDIUM DENCE CLAYTY SAND(S)	0.00		
		1.00		
		2.00	N-6 (204)	
		3.00	N-11 (465)	
		4.00		
	893.500	5.00	N-9 (446)	
		6.00	N-11 (447)	
		7.00	N-13 (467)	
		8.00		
		9.00	N-6 (205)	
		10.00	N-13 (467)	
		11.00		
		12.00	N-9 (7811)	
		13.00		
		14.00	N-28 (30187)	
15.00	N-34 (17222)			
LOGS TO TO VERY DENSE SILT SAND (SM)	16.00			
	17.00	N-41 (121820)		
	18.00			
	19.00	R (11020) FOR 100mm		
	20.00	R (12180) FOR 100mm		
	21.00	NL, NL FOR 100mm		
	22.00	NL, NL FOR 100mm		
	23.00	RF0 FOR 100mm		
	24.00	NL, NL FOR 100mm		
	25.00	RF0 FOR 100mm		
	26.00			
	27.00	RF0 FOR 100mm		
	28.00	RF0 FOR 100mm		
	29.00	RF0 FOR 100mm		
	30.00	RF0 FOR 100mm		
817.500				
END OF BOREHOLE AT 30.00M				
BOREHOLE ID (BH-12)				

[illegible]

- [illegible]

[illegible]

SPECIAL NOTE :
RAIL LEVELS ARE TAKEN FROM LATEST REVISION OF ALIGNMENT

LOADING STANDARD

A) PRO.BRIDGE:17T-AXLE LOAD 2008 STD
B) EXG.BRIDGE:MBG.-1987 LOADING

STATE GOVERNMENT OFFICIAL'S APPROVAL		DATE	GMC/CI/PLANNING/GC-2		SR/DOM	GMC/CI/PLANNING/GC-2		EMPLOYER :  RAIL INFRASTRUCTURE DEVELOPMENT COMPANY (KARNATAKA) LIMITED	
CHIEF ENGINEER (B&P/BENGALURU)			GMD/DESIGN		SR/DSTE			GENERAL CONSULTANTS:  AECOM EGIS-WSP	
SUPERINTENDING ENGINEER (B&P)			DIRECTION/PROJECT & PLANNING		ADRM/TS/IRC			PROJECT : BENGALURU SUBURBAN RAILWAY PROJECT (BSRP) K-RIDE CORRIDOR - 2	
EXECUTIVE ENGINEER (B&P)			GC BSRP SIGNATURES		DRM/SGC	SWR- HEADQUARTERS		DRAWING TITLE : GENERAL ARRANGEMENT DRAWING FOR OVER RAIL OF SPAN 1 x 6m-DWG AT BSRP Ch. -0+137.023 TO +0-178.023 (E.G. HOR. NO. 533 AT IR. KM. 205/546 OF SPAN 6 x 6 m DSC SLAB)	
ASST EXECUTIVE ENGINEER (B&P)			PE/IC FOR BSRP		JB/PRO/EGH	DATE		DRAWING NO. : Q2207/1-BSRP-CR2-C-YD-DWG-GR-20-4001	
			PD/OC FOR BSRP		AXEN/HQ/RL			SCALE : AS SHOWN	
					DE/CE/HQ/RL			DATE : 2020.07.20	
					CYB/SL			DESIGNER : F	
								CHECKER : D	